

## **Attraction Information**

**Attraction Name:** Double Up (single tubes only)

**Attraction Type:** (1) 54" Aqua tube – inner tube ride,

**Attraction Numbers:** #6

**Attraction Rating:** 4 – High Thrill Slides / Attractions

## **Rider Admission Information**

**Height Requirement:** 48" Barefoot or 42" with a lifejacket on.

**Weight Requirement:** Maximum Load: 1 person, 300lbs.

**Riding Position:** Guest must sit properly in a single inner tube. Feet over the edge, bottom in the center hole, and holding onto the handles at all times. No lap children.

**Riding Requirements:** All footwear and eyewear must be removed or secured. No metal ornamentation on swimwear that could cause damage to the sliding surface. No jeans permitted on slides.

**Physical Requirements:** Must have seated posture control, appropriate center of gravity, upper torso control, one functioning arm, one functioning leg, and at least 3 functioning extremities. Must be able to enter / exit ride safely and mental capacity to ride. Only approved prostheses allowed. No casts allowed (exception padded wrist casts).

## **Certification Requirements**

**Approximate Certification Time (Top Dispatcher or GSA):** Minimum of CPR / First Aid Certification, Department Training completion plus additional 20 minutes related to this attraction.

**Certification Test Requirement:** 100% proficiency

# **Double Up Standard Operating Procedures**

## **Top Dispatch Attendant/Guard:**

Minimum / Maximum Staffing: 1 Dispatch Attendant

The Attendant works on the platform / dispatch dock and performs several important functions which include:

1. Attendant will keep guests behind the steps into the dispatch dock.
2. Attendant will ensure that all riders meet the height and physical requirements.
3. Attendant will ask guests to remove all footwear, unsecure eyewear, hats, unnecessary jewelry, and secure all loose articles.
4. Attendant will ask guest to enter flume and sit down in the tube and wait to be dispatched.
5. Attendant will ensure rider is properly seated in flume (bottom in hole, legs over edge and holding onto handles).
6. Attendant will dispatch each slide every 15 seconds minimum (using clock).
7. Attendant will begin cycle again.

*Important:* The Dispatch Attendant must stay very alert to what is happening on the platform. This person will need to maintain extreme control to ensure that only the riders of the slides are on the platform. The attendant will also need to be aware to maintain a safe and fluid dispatch rate.

*Hint:* The dispatch attendant may also forewarn guests in line to have their shoes and sunglasses removed and secure.

## **Bottom Guard:**

Minimum / Maximum Staffing: 1 Catchpool Lifeguard

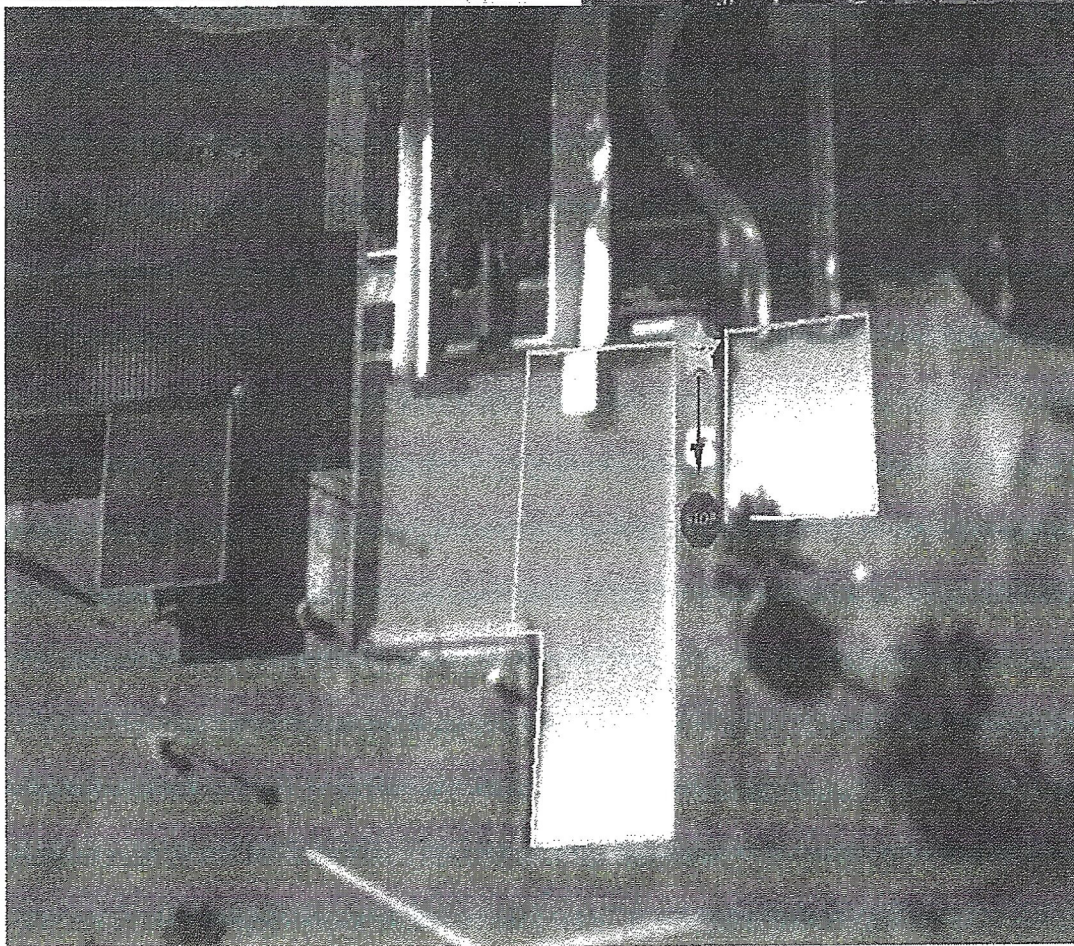
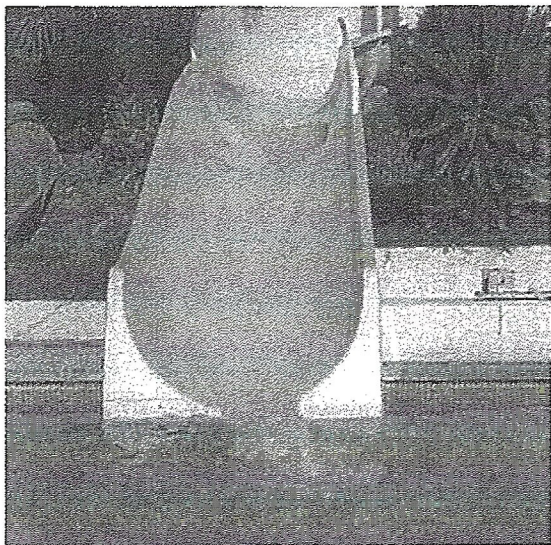
The guard works at the catchpool and performs several important functions which include:

1. Guard will always maintain 10/20 protection rule.
2. Guard will observe all slides and riders.
3. Guard will assist guests as needed and be prepared to react in case of any incident.
4. Guard will ensure riders exit the catchpool quickly and safely.
5. Guard will ensure the riders do not swim in the catchpool or sit on the stairs or sides of the pool.
6. Guard will ensure that a tube comes out of the flume with each group of riders. If a tube does not come out of the attraction with each group, the top dispatcher must be notified to stop dispatch and a Team Leader must be called. The attraction may resume dispatch after the object has been cleared and Team Leader permission has been given.
7. Guard will ensure that proper dispatch procedures are being followed at all times.

*Important:* The bottom Guard must stay alert to what is going on around the slides. It is important to be pro-active in assisting guests out of the water, especially children. In addition, the Guard needs to pay special attention to the corners and stairs of the catchpool and encourage guests to return their tube to the tube storage location or hand the tube off to the next guest waiting in line.



## Double Up Water Flow and Zones





## **Double Up Standard Exiting Procedures**

There are two ways to begin the SEP at Under Tow. The first way to initiate the SEP is to position a guard at the bottom of the walkway to stop guests from going to the top. The top guard will dispatch all guests that are in line for the attraction. Once all guests have safely exited the catch pool, the top guard will use two short whistle blasts and instruct the bottom guard to close the attraction (Arms crossed above the head). A team leader will then engage the e-stop, turning off the motors. This method of initiating the SEP is used when the reason for closure is a non-emergency (i.e. closing of the park, supervision request, etc.). The second way to initiate the SEP is by the bottom guard blowing two long whistle blasts. At the sound of the two long whistle blasts, the SEP will start immediately. The guard at the top will stop dispatch and clear the deck of all guests. If instructed by management, the top guard will walk the guests down to the bottom of the attraction. Once the guests that were dispatched have cleared the slides, the bottom guard will then engage the e-stop, turning off the motors. This method of initiating the SEP will be used in the case of a major aquatic emergency (i.e. a possible spinal, cardiac arrest, etc.). In the event of a catastrophic event, management will use our public address system to instruct guests on what to do.

**Approximate SEP time: 10 Minutes**