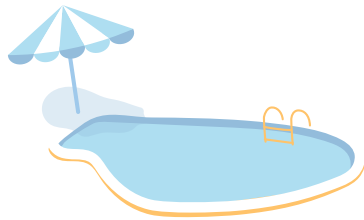


Pool TEST STRIPS HOW TO



1



**DIP ELBOW DEEP
1 SECOND**

2



**HOLD OUT OF WATER
15 SECONDS**

3



**COMPARE COLORS
(CL AND PH)**

4



**DOCUMENT
CALL IF NEEDED**

****DON'T DIP NEAR AUTOFILL / DON'T TOUCH THE SQUARES****

****TEST TWICE BEFORE CALLING IF OUT OF RANGE****